

DIN-422 Plug Assembly (for CEM120 AUX Port)

This instruction illustrates how to assemble the DIN-422 plug. You'll need to decide the wire counts (up to 4) and wire gauge (depends on total current the device will draw). For example, if the maximum current drawn per pair is 5A, you probably need AWG20 wires.

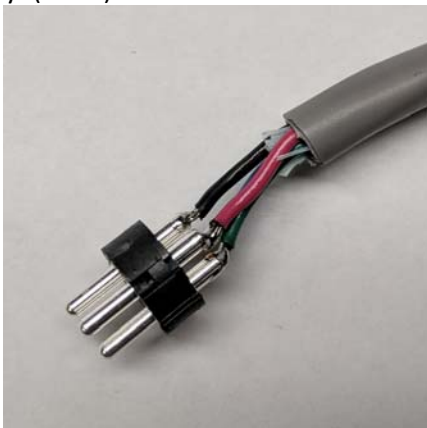
Soldering work (or other means) is needed to attach the wires. There are 4 conductors inside this mini DIN connector. Make sure you mark/remember which wire each of them is soldered to.

iOptron is not responsible for any accident or damaged part during assemble.

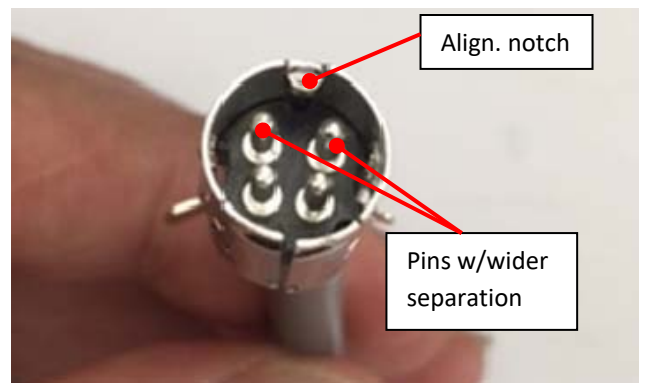
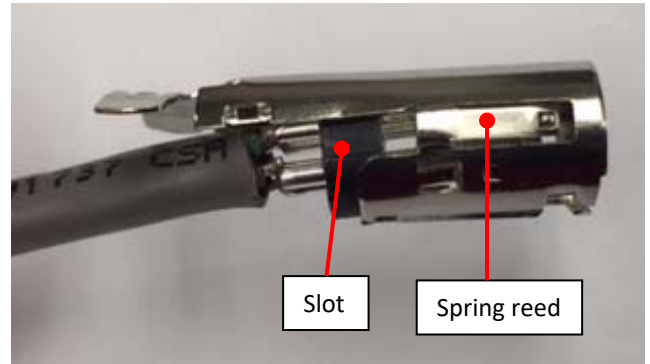
A non-assembled DIN-422 plug has 7 small parts, as shown below.



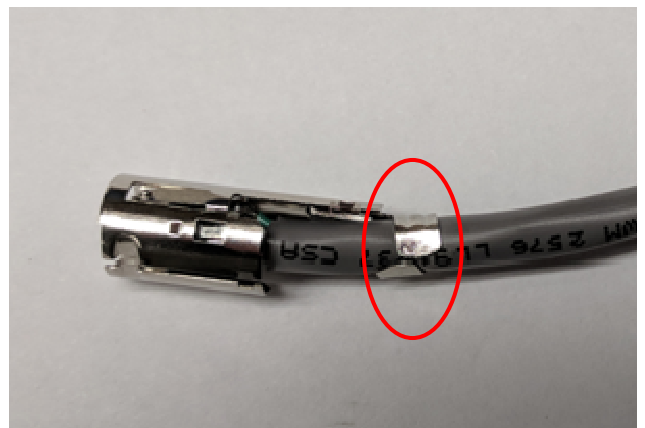
1. Select a correct wire/wire bundle. Cut to a proper length. Strip the plastic coating outside the wire. Solder them to the short pins on the plug. Please note that 4 pins on the plug are NOT placed uniformly. (see 2)



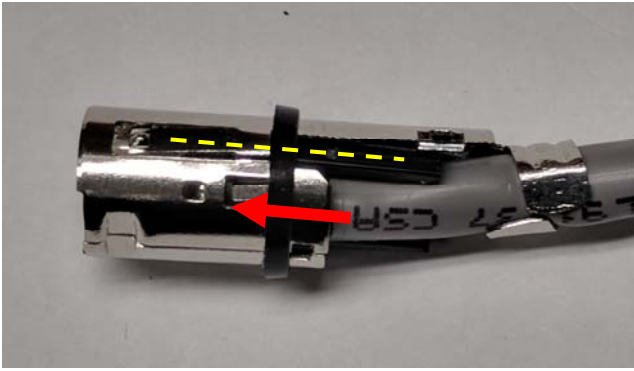
2. Insert the plug to the chaste with two slots aligned to the spring reeds and two pins with wider separation on top of the chaste with alignment notch. Push the plug all the way in.



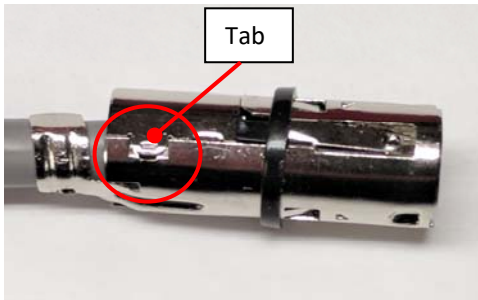
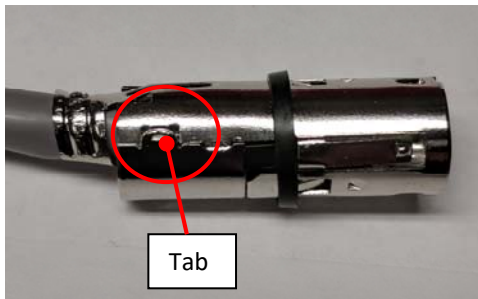
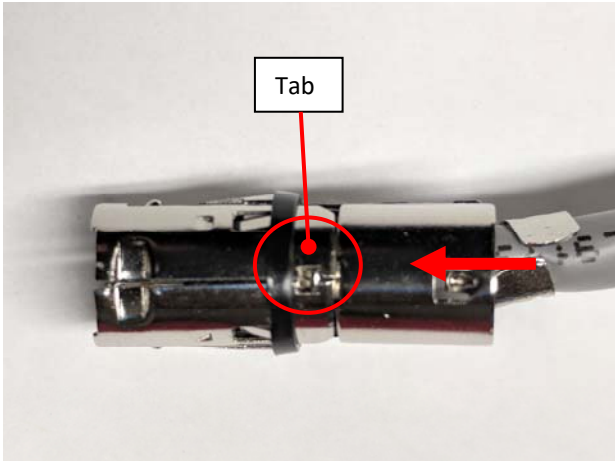
3. Bend the metal wings to lock the cable.



4. Insert the black spring stop ring from the wire end and align two studs along to the spring reeds.



5. Insert the locking piece. Make sure three tabs are locked in position.



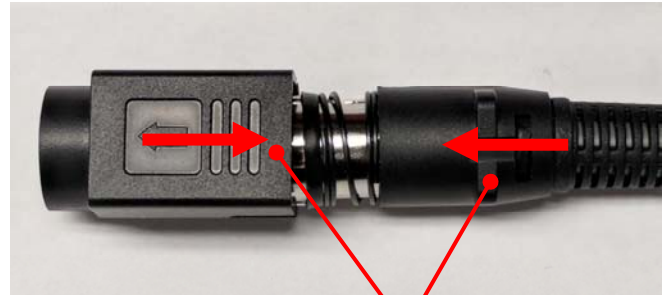
6. Slide the spring on to the chasse from wire end.



7. Slide top plastic outer case with wire buffer from the wire end.



Slide the bottom plastic outer case from the pin end. Align the flat sides too each other and push them together. You should hear the click sound.



Tab sides

