



iOptron[®] Tri-Pier Instruction Manual

Product #8034

Tri-Pier #8034

The iOptron® Tri-Pier combines the strength and stability of a pier with the leveling flexibility of a tripod. It is designed for iOptron GOTO mounts, which includes CEM70, CEM60, GEM45, CEM40, iEQ45/iEQ45 Pro, HEM44, HAE43, iEQ30/iEQ30 Pro, MiniTower/MiniTower II/MiniTower Pro mount. It also can be used for other mounts with a proper customized mounting adapter, #8036.

Specifications:

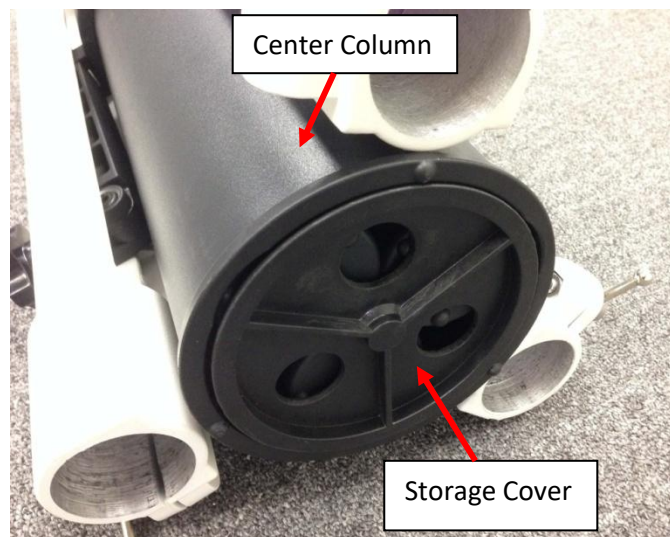
Max Payload	220 lbs (100 kg)
Self weight	~25.8 lbs (11.7 kg)
Pier diameter	5.7" (144 mm) with 150mm top plate
Adjustable height	31.5"-42.5" (800-1080 mm)
Uneven ground range	3.35" (85 mm)
Leg maximum spread	Ø48.8" (Ø1240 mm)
Pier dimension folded	Ø12.8"x 26" (Ø325 x 660 mm)

Assembly: (Actual product may differ from the photos.)

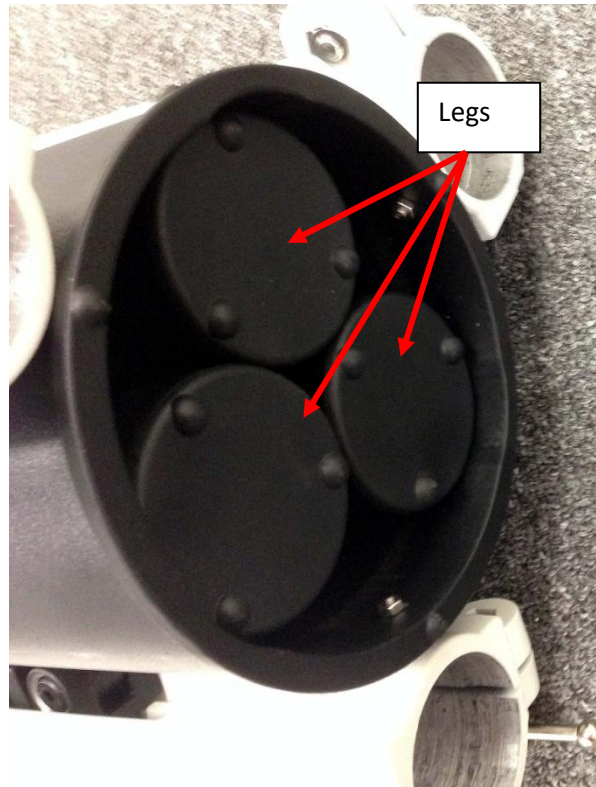
1. Take the Tri-pier out from the package or carrying case.



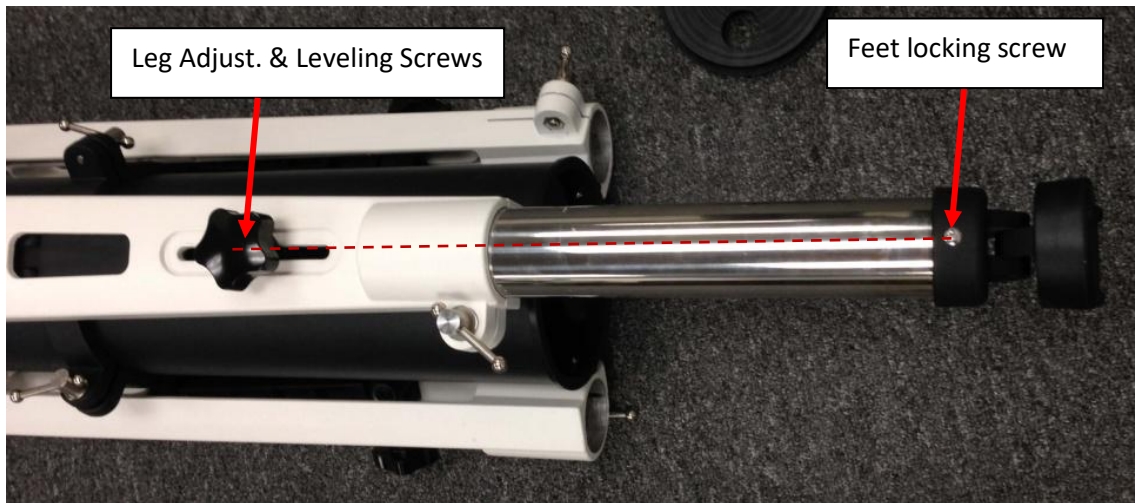
2. Unthread the leg Storage Cover from the bottom of the Center Column.



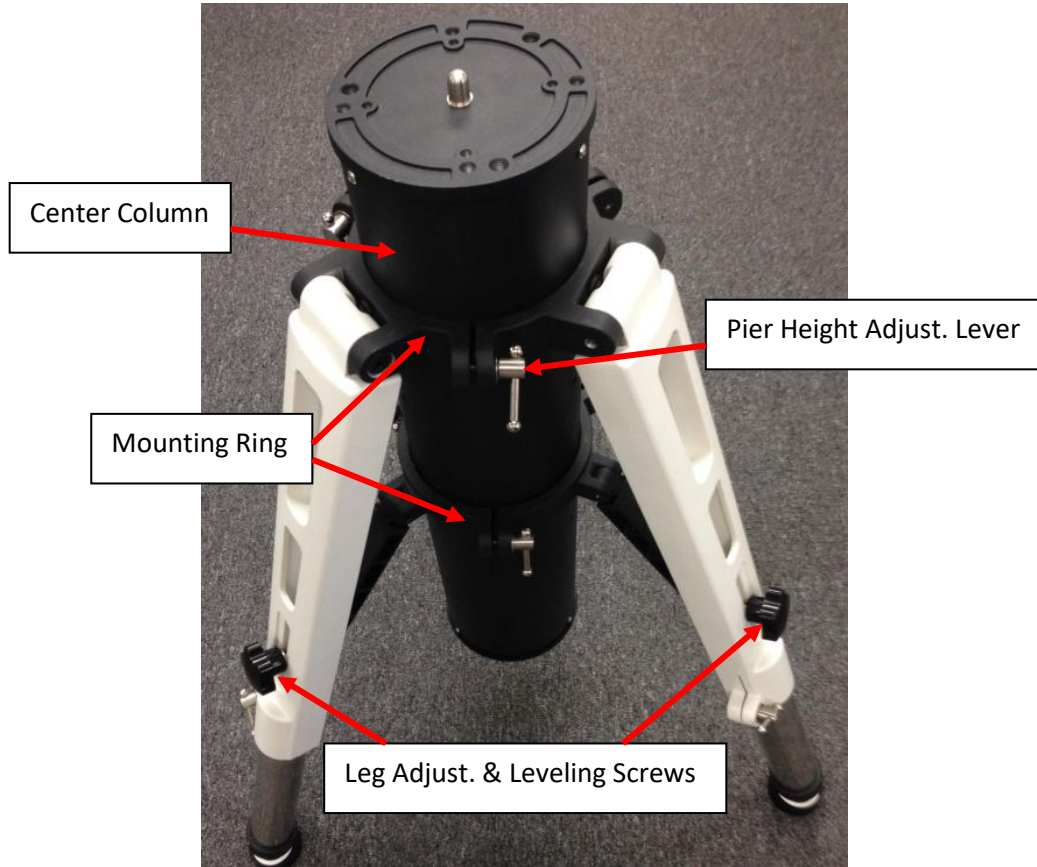
3. Pull a Tri-pier leg out from the pier tube. There is a vibration suspension pad on each foot.



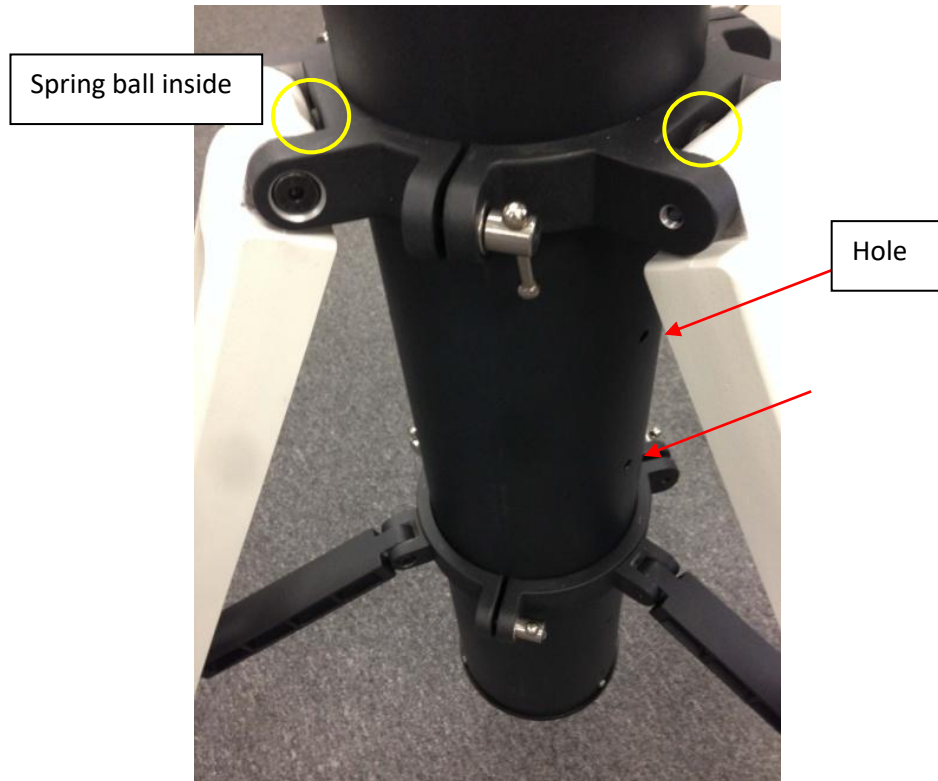
4. Install the leg onto the Tri-pier leg house. Make sure the feet locking screw is aligned to the Leg Adjustment & Leveling Screw.



5. After all three legs are installed, set the Tri-pier upright. Loosen 6 Pier Height Adjustment Levers (do not fully separate the Mounting Rings from the Center Column) and 3 Leg Adjustment & Leveling Screws.



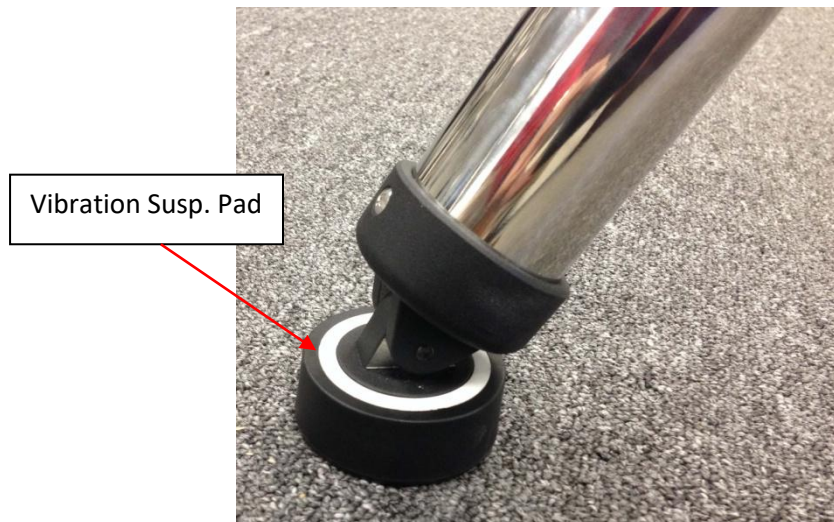
6. There are 6 sets of holes on the Center Column for height adjustment. There are 3 spring balls inside each Mounting Ring to lock the position.



7. Move the Center Column up or down to desired height until hear the “click” sound. Lock the Pier Height Adjustment Levers.



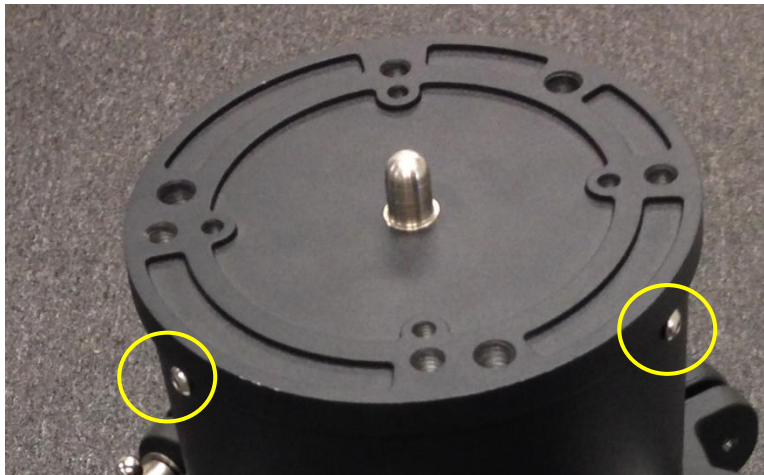
8. Adjust the Tri-pier legs by spreading the legs. Make sure that the Tri-pier feet are sit inside the vibration suspension pads. The pads and the ground surface are contacted well. Tighten the Leg Adjustment & Leveling Screws to secure the Tri-pier.



9. To collapse the Tri-pier for storage, release the six (6) Pier Height Adjustment Levers and three (3) Leg Adjustment & Leveling Screws. Push the Center Column down and collapse the legs. Remove the legs and put them inside the Center Column and lock the cover.

Replace center Post for MiniTower/MiniTower Pro/AZ Mount Pro:

1. Remove three screws that hold the top plate in place.



2. Replace it with MiniTower Center Post.



3. Reinstall the top plate.

Pier Top Dimension:

The rest: 